

---

# Spotlight and Microsoft Operations Manager Integration

## Introduction

This document describes how to launch Spotlight from Microsoft Operations Manager 2000 and 2005 and is used as an appendix to the existing Spotlight user guide and online Help.

## Installing Spotlight on Windows

Spotlight on Windows must be installed on a computer where Microsoft Operations Manager Console 2000 or 2005 is installed.

## Configuring the Microsoft Operations Manager Console

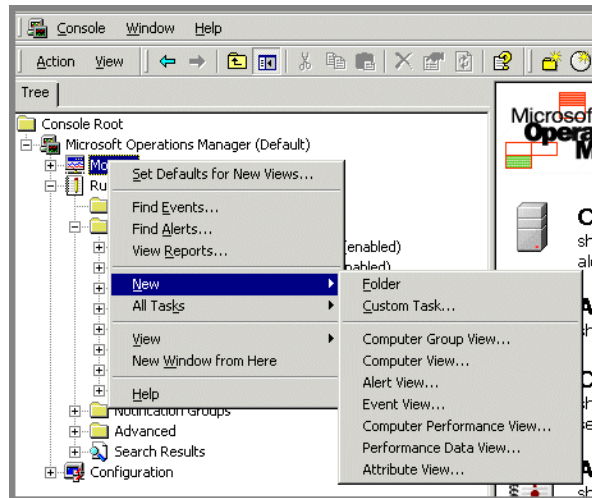
You can configure the Microsoft Operations Manager Console to launch Spotlight. You do this by creating a custom task then using that task to launch Spotlight from a Microsoft Operations Manager Console alert view. Note that the procedure for creating such a task differs between MOM 2000 and MOM 2005.



For detailed information about Microsoft Operations Manager, see the documentation provided with Microsoft Operations Manager.

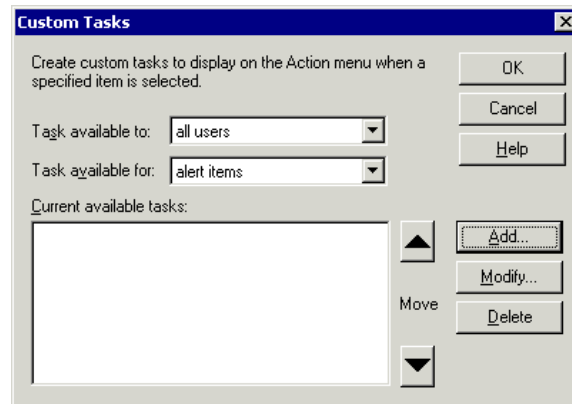
## To create a custom task in Microsoft Operations Manager 2000

- 1 Open the Microsoft Operations Manager Console.
- 2 On the left pane, in the tree view, right-click **Monitor**.
- 3 Select **New | Custom Task**.



- 4 From the **Task** available to drop-down list, select the Microsoft Operations Manager users who can use this task.
- 5 From the **Task** available for drop-down list, select alert items.

**6 Click Add.**

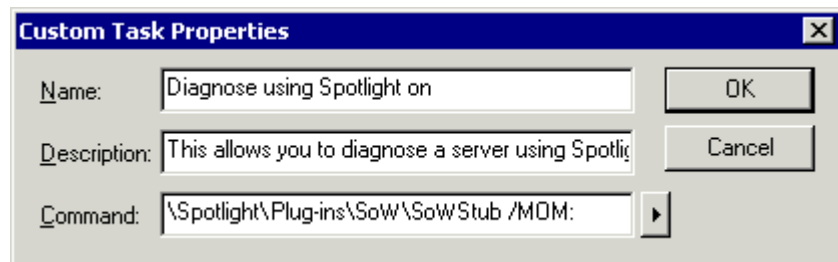


**7 Enter a name for the custom action.**

**8 Enter a description of the custom action.**

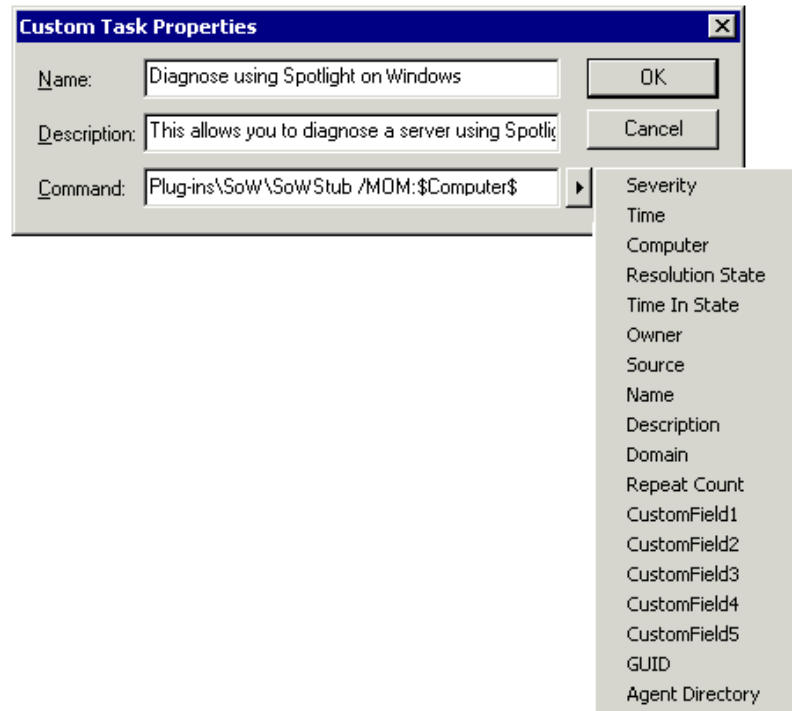
**9 Enter the path to the SoWStub.exe file by typing the following into the Command field:**

{pathname} SoWStub.exe /MOM:



The default path is C:\Program Files\Quest Software\Spotlight\Plug-Ins\SoW

- 10 Click the arrow to the right of the Command field and select **Computer** from the list of tokens.



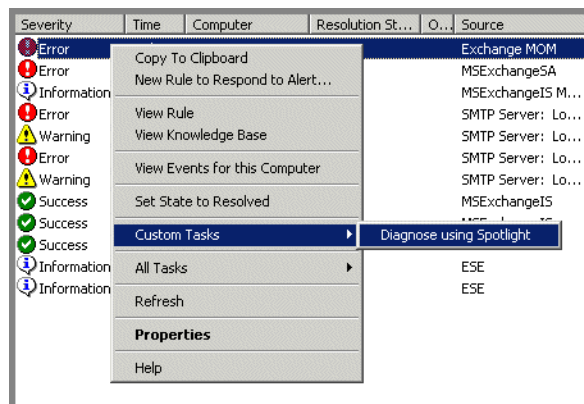
The text in the Command field should now read:

{pathname} SoWStub.exe /MOM:\$Computer\$

- 11 Click **OK**.
- 12 Click **OK**.

To launch Spotlight from a Microsoft Operations Manager 2000 alert view

- 1 Right-click an alert in an alert view.

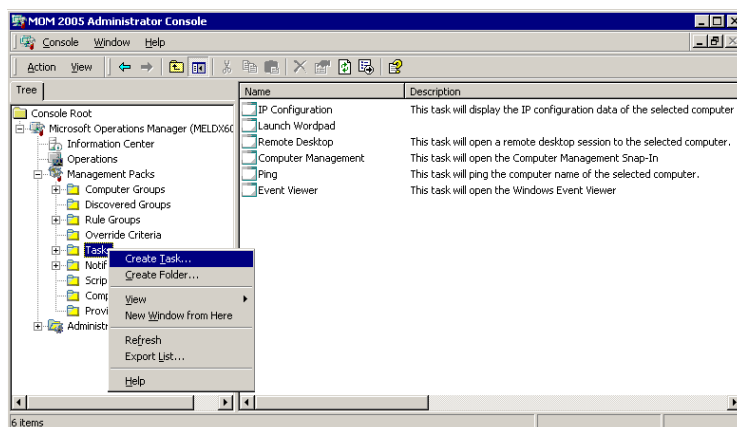


- 2 Select Custom Tasks.
- 3 Select the name given to the custom action.

In this case, the name of the custom action is Diagnose using Spotlight.

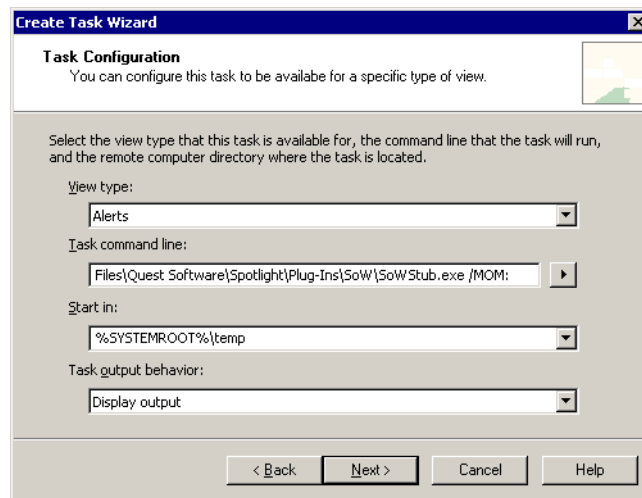
## To create a custom task in Microsoft Operations Manager 2005

- 1 Open the Microsoft Operations Manager Administrator Console.
- 2 On the tree view in the left pane, expand the Management Packs node then right-click Tasks | Create Task.



- 3 In the Create Task Wizard, click **Next** and then select the following options
  - From the Task Run Location list, select **Operator Console**.
  - From the Type list, select **Command Line**.
- 4 Click **Next**.
- 5 From the View Type list, select **Alert**.
- 6 Enter the path to the **SoWStub.exe** file by typing the following into the Task command line field:

{pathname}SoWStub.exe /MOM:



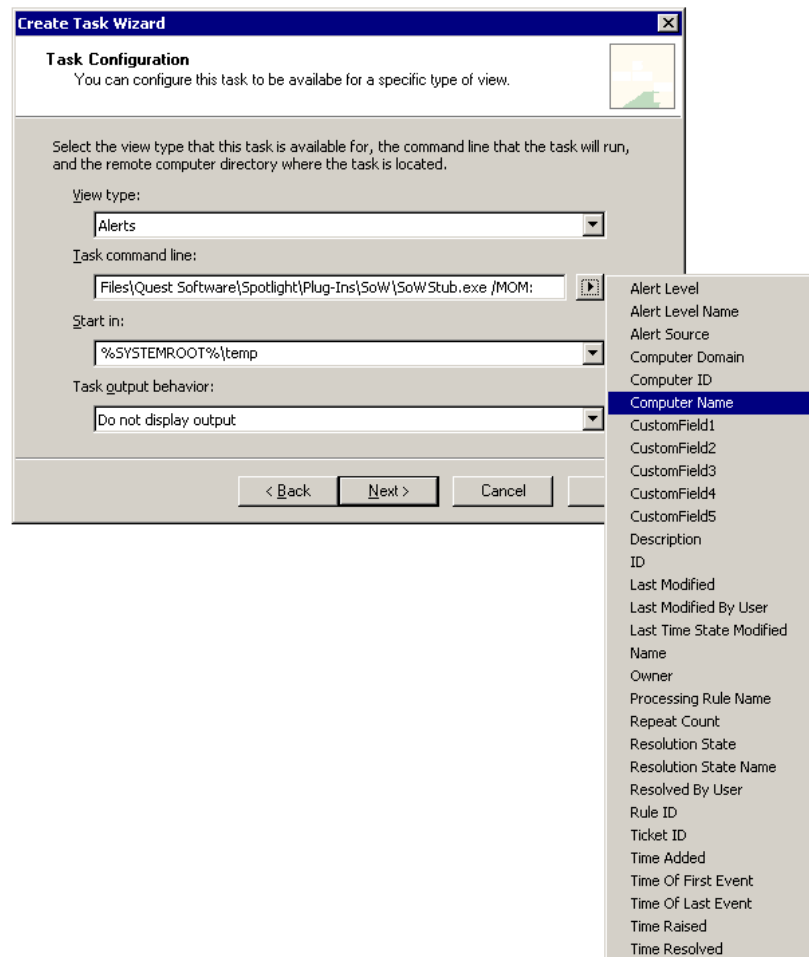
The screenshot shows the 'Create Task Wizard' dialog box, specifically the 'Task Configuration' step. The title bar reads 'Create Task Wizard'. Below the title bar, the text 'Task Configuration' is followed by a subtitle: 'You can configure this task to be available for a specific type of view.' Below this, a paragraph states: 'Select the view type that this task is available for, the command line that the task will run, and the remote computer directory where the task is located.' The dialog contains four main configuration fields, each with a label and a dropdown menu:

- View type:** The dropdown menu is set to 'Alerts'.
- Task command line:** The text box contains 'Files\Quest Software\Spotlight\Plug-Ins\SoW\SoWStub.exe /MOM:'.
- Start in:** The dropdown menu is set to '%SYSTEMROOT%\temp'.
- Task output behavior:** The dropdown menu is set to 'Display output'.

At the bottom of the dialog, there are four buttons: '< Back', 'Next >', 'Cancel', and 'Help'.

The default path is C:\Program Files\Quest Software\Spotlight\Plug-Ins\SoW

- 7 Click the arrow to the right side of the Task command line field and select **\$Computer Name\$** from the list of tokens.



The text in the Task command line field should now read:

{pathname}SoWStub.exe /MOM:\$Computer Name\$

- 8 From the Task Output Behavior list, select **Do not display output** and then click **Next**.
- 9 Type a valid name for the custom task and then click **Finish**.

To launch Spotlight from a Microsoft Operations Manager 2005 alert view

- 1 Open the Microsoft Operations Manager 2005 Operator Console.
- 2 Display the Alert View and locate SQL Server related alerts, then run your newly created Task from the Tasks Pane.

