



PASS-GUARANTEED.COM

100% Money Back Guarantee!!!

Your #1 Certification Training Resource

Product Details from Pass-Guaranteed.com:

Advanced Routing and Switching For Field Engineers

642-055

Demo Version

Download Full Version

Visit

<http://www.Pass-Guaranteed.com>

Complete Certification Training Solutions



**Practice Exam
Test Questions**

Click Here To Learn More

Go ->



**Online Course
Tutorials**

with TESTING ENGINE

Go ->



Study Guides

Click Here To Learn More

About Our Prep Labs

Go ->



Lab Scenarios

Click Here To Learn More

About Our Prep Labs

Go ->



Preparation Labs

Click Here To Learn More

About Our Prep Labs

Go ->



**Online
Testing Engine**

Click Here To Learn More

Go ->



Study Tips

This product will provide you with questions and answers carefully compiled and written by our Expert Senior Certified Staff. Our practice questions are designed to help you learn the concepts behind the questions rather than be a strict memorization tool.

Important Note:

Please Read Carefully

Repeated readings of our Pass-Guaranteed.com Practice Exam will increase your comprehension. We constantly add to and update our Practice Exams with new questions, answers and explanations, so check that you have the latest version of this Practice Exam before you take your exam.

For security purposes, each PDF file is encrypted with a unique serial number associated With your Pass-Guaranteed.com account information. In accordance with International Copyright Law, Pass-Guaranteed.com reserves the right to take legal action against you should we find copies of this PDF file distributed to other parties.

Update Notifications (Latest Version)

We are constantly reviewing our products. New material is added and old material is revised. Free Updates are available for 180 days after purchase. If you purchased a bundle, you will have Free Updates for 1 YEAR!

You can signup to our newsletter for instant notification whenever an update is released by becoming a Pass-Guaranteed.com member at: <http://www.pass-guaranteed.com/log.htm>

By becoming a Pass-Guaranteed.com member, you also get a chance to win a FREE Practice Exam of your choosing. We give away 3 Pass-Guaranteed.com Practice Exams every week to 3 lucky winners.

Pass-Guaranteed.com Product Specials

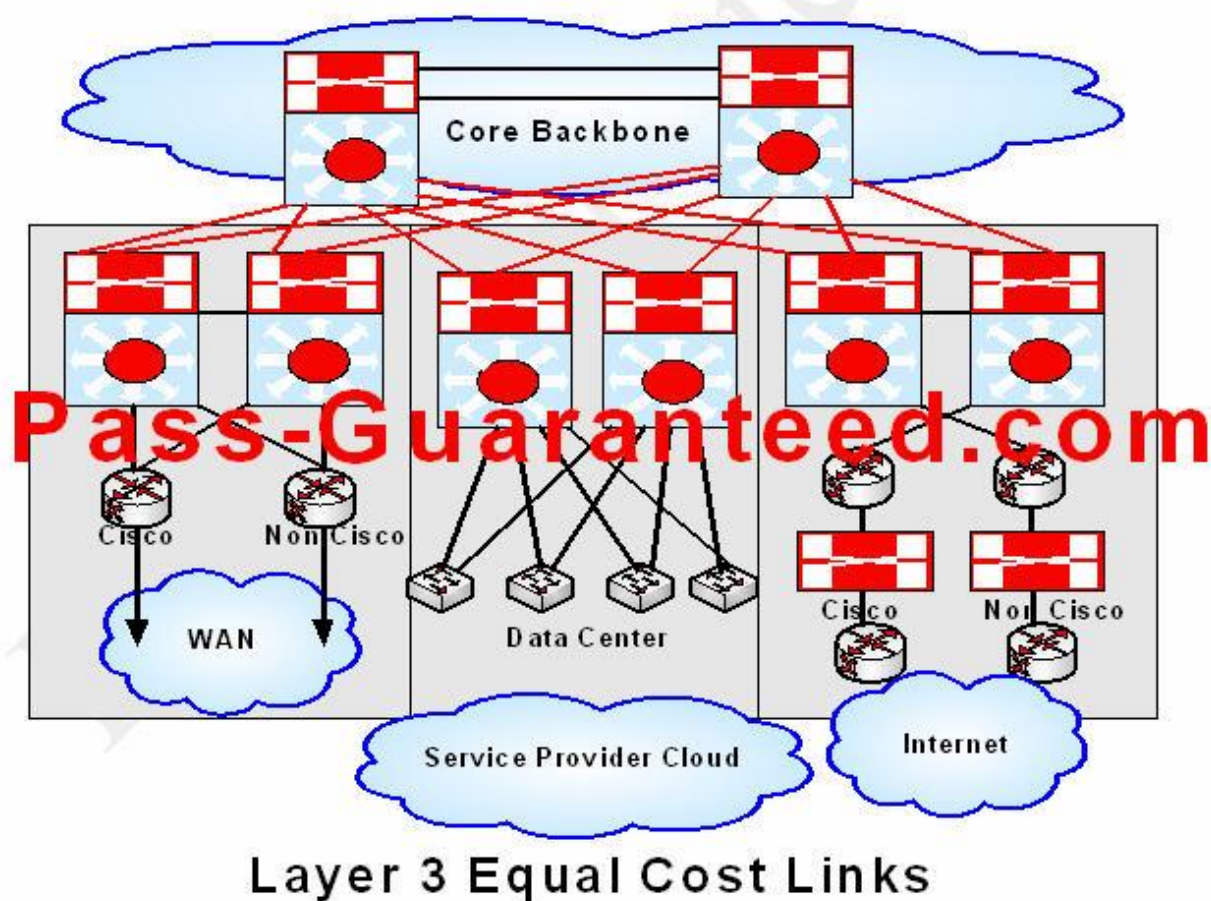
Pass-Guaranteed.com Custom Bundle Requests, cover all Pass-Guaranteed.com Products!!! You can visit our Special Bundle Discounts from Pass-Guaranteed.com or make your own Custom Bundle Request with Pass-Guaranteed.com here: <http://www.pass-guaranteed.com/bundles.htm>

Pass-Guaranteed.com Custom Bundle Request Form let's you create your own Bundle Of Products!!! You can select and group any of our products for your Custom Bundle and we will give you up to a **50% Discount** on your Custom Bundle Package. This includes our [Practice Test Questions](#), [Online Course Tutorials](#), [Study Guides](#), [Lab Scenarios](#) and our [Certified Online Instructor](#) service.

Please visit: <http://www.pass-guaranteed.com/custom-request.htm> If you would like to purchase a Custom Bundle from Pass-Guaranteed.com.

QUESTION: 1

Refer to the exhibit. You have a Cisco router and a non-Cisco router directly connected to a service provider cloud. You want to set up dual connectivity into the corporate network. Which protocol must you configure?



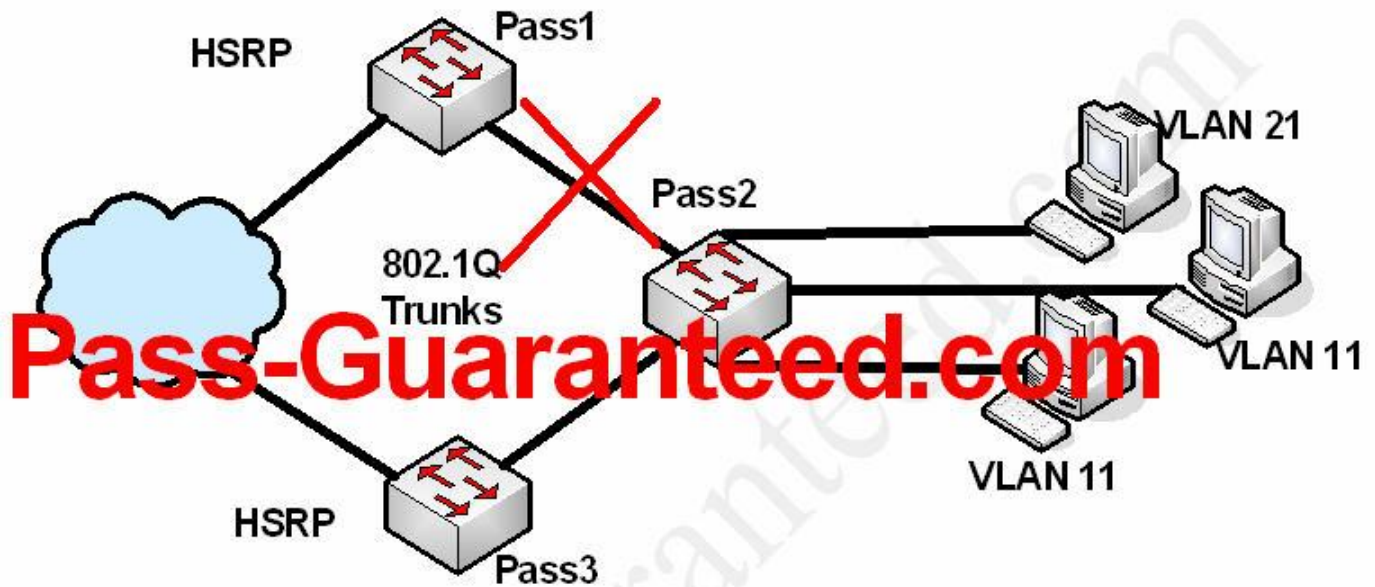
- A. Virtual Router Redundancy Protocol
- B. Multigroup Hot Standby Router Protocol
- C. Hot Standby Router Protocol
- D. Gateway Load Balancing Protocol

Answer: A

QUESTION: 2

Refer to the exhibit. Users complain that they intermittently lose data and connections to important servers. After investigation, you discover that the 802.1q trunk between 1 and 3 is down. Even though the hsrp group 11 is being serviced by 2, you discover that the svi for vlan 11 is in the up state on 1.

Which three Cisco catalyst ios commands should you use on 1 to find the source of this problem? (Choose Three)



- A. show interfaces <fast | gig> mod/port trunk
- B. show vtp status
- C. show standby vlan 11 brief
- D. show interfaces vlan 11
- E. show spanning-tree vlan 11

Answer: A, D, E

QUESTION: 3

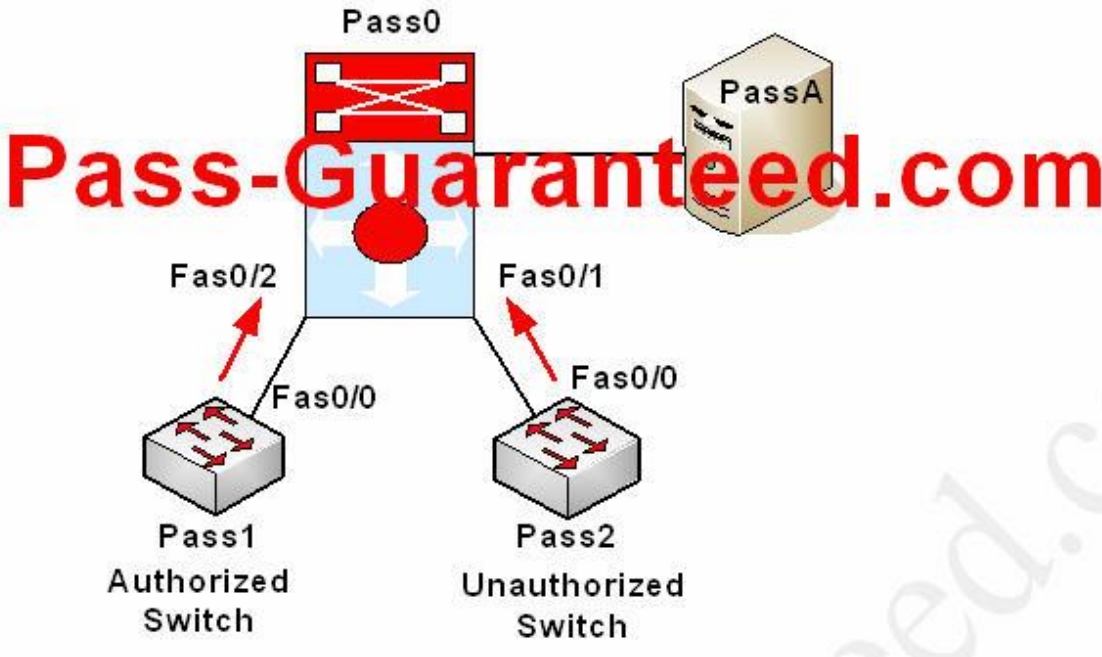
What are four advantages to using tunnel brokers in an IPv6 transition environment? (Choose Four)

- A. Tunnel brokers automatically provide configuration parameters to peer routers.
- B. IPv6 enabling a node looks automatic to the end user.
- C. Tunnel broker configuration is automated in Cisco IOS.
- D. Tunnel information is sent via IPv4.
- E. Tunnel brokers make it simpler for nontechnical users to deploy manual tunnels.

Answer: A, B, D, E

QUESTION: 4

Refer to the exhibit. Which Catalyst switch configuration would protect a customer network from possible disruption in the case in which an unauthorized switch is added to the network?



- A. Pass0#show running-configuration!hostname Pass0!no spanning-tree optimize bpdu transmissionspanning-tree extend system-id!interface FastEthernet0/1switchport port-security violation restrict!
- B. Pass0#show running-configuration!hostname Pass0!no spanning-tree optimize bpdu transmissionspanning-tree extend system-id!interface FastEthernet0/1switchport protected!
- C. Pass0#show running-configuration!hostname Pass0!no spanning-tree optimize bpdu transmissionspanning-tree extend system-id!interface FastEthernet0/1switchport mode access!
- D. Pass0#show running-configuration!hostname Pass0!spanning-tree portfast bpduguard defaultno spanning-tree optimize bpdu transmissionspanning-tree extend system-id!interface FastEthernet0/1spanning-tree guard root!

Answer: D

QUESTION: 5

Pass.com recently acquired a smaller competitor. The acquired company is not currently using Cisco routers, so you have connected the two WANs via an authenticated PPP link. After configuring both routers, issuing the show interface s0/0 command on the Cisco router shows the interface to be in the up/down state. Which two of these are possible causes? (Choose Two)

- A. CHAP passwords do not match.
- B. IP addresses are not in the same subnet.
- C. Bandwidth statements do not match.
- D. CDP versions do not match.
- E. MTUs do not match.

Answer: A, E

QUESTION: 6

Which configuration will enable OSPF for IPv6 on FastEthernet 0/0/0?

- A. interface FastEthernet0/0/0ipv6 address 2001:0db8:0:0:1::/64 eui-64ipv6 enablerouter ospf 1router-id 10.11.11.1network 2001:0db8:0:0:1::/64 area 1
- B. interface FastEthernet0/0/0ipv6 address 2001:0db8:0:0:1::/64 eui-64ipv6 enableipv6 ospf 1 area 1router ospf 1router-id 10.11.11.1
- C. interface FastEthernet0/0/0ipv6 address 2001:0db8:0:0:1::/64 eui-64ipv6 enableipv6 ospf 1 area 1ipv6 router ospf 1router-id 10.11.11.1
- D. interface FastEthernet0/0/0ipv6 address 2001:0db8:0:0:1::/64 eui-64ipv6 enableipv6 router ospf 1router-id 10.11.11.1network 2001:0db8:0:0:1::/64

Answer: C

QUESTION: 7

Which two statements are correct in verifying SPFv3 IPv6 routing configurations? (Choose Two)

- A. OSPFv3 is enabled per-link, not per-network.
- B. When configuring a broadcast interface, OSPFv3 requires a list of OSPFv3 neighbors to be manually configured.
- C. OSPFv3 requires router to be running CEF.
- D. OSPFv3 router ID is now 128 bits instead of 32 bits.

E. OSPFv3 area ID and link-state ID are now 128 bits instead of 32 bits.

Answer: A, C