



PASS-GUARANTEED.COM

100% Money Back Guarantee!!!

Your #1 Certification Training Resource

Product Details from Pass-Guaranteed.com:

Communication Server (CS) 1000 Release 4.0

920-141

Demo Version

Download Full Version

Visit

<http://www.Pass-Guaranteed.com>

Complete Certification Training Solutions



**Practice Exam
Test Questions**

Click Here To Learn More

Go ->



**Online Course
Tutorials**

with TESTING ENGINE

Go ->



Study Guides

Click Here To Learn More
About Our Prep Labs

Go ->



Lab Scenarios

Click Here To Learn More
About Our Prep Labs

Go ->



Preparation Labs

Click Here To Learn More
About Our Prep Labs

Go ->



**Online
Testing Engine**

Click Here To Learn More

Go ->



Study Tips

This product will provide you with questions and answers carefully compiled and written by our Expert Senior Certified Staff. Our practice questions are designed to help you learn the concepts behind the questions rather than be a strict memorization tool.

Important Note:

Please Read Carefully

Repeated readings of our Pass-Guaranteed.com Practice Exam will increase your comprehension. We constantly add to and update our Practice Exams with new questions, answers and explanations, so check that you have the latest version of this Practice Exam before you take your exam.

For security purposes, each PDF file is encrypted with a unique serial number associated With your Pass-Guaranteed.com account information. In accordance with International Copyright Law, Pass-Guaranteed.com reserves the right to take legal action against you should we find copies of this PDF file distributed to other parties.

Update Notifications (Latest Version)

We are constantly reviewing our products. New material is added and old material is revised. Free Updates are available for 180 days after purchase. If you purchased a bundle, you will have Free Updates for 1 YEAR!

You can signup to our newsletter for instant notification whenever an update is released by becoming a Pass-Guaranteed.com member at: <http://www.pass-guaranteed.com/log.htm>

By becoming a Pass-Guaranteed.com member, you also get a chance to win a FREE Practice Exam of your choosing. We give away 3 Pass-Guaranteed.com Practice Exams every week to 3 lucky winners.

Pass-Guaranteed.com Product Specials

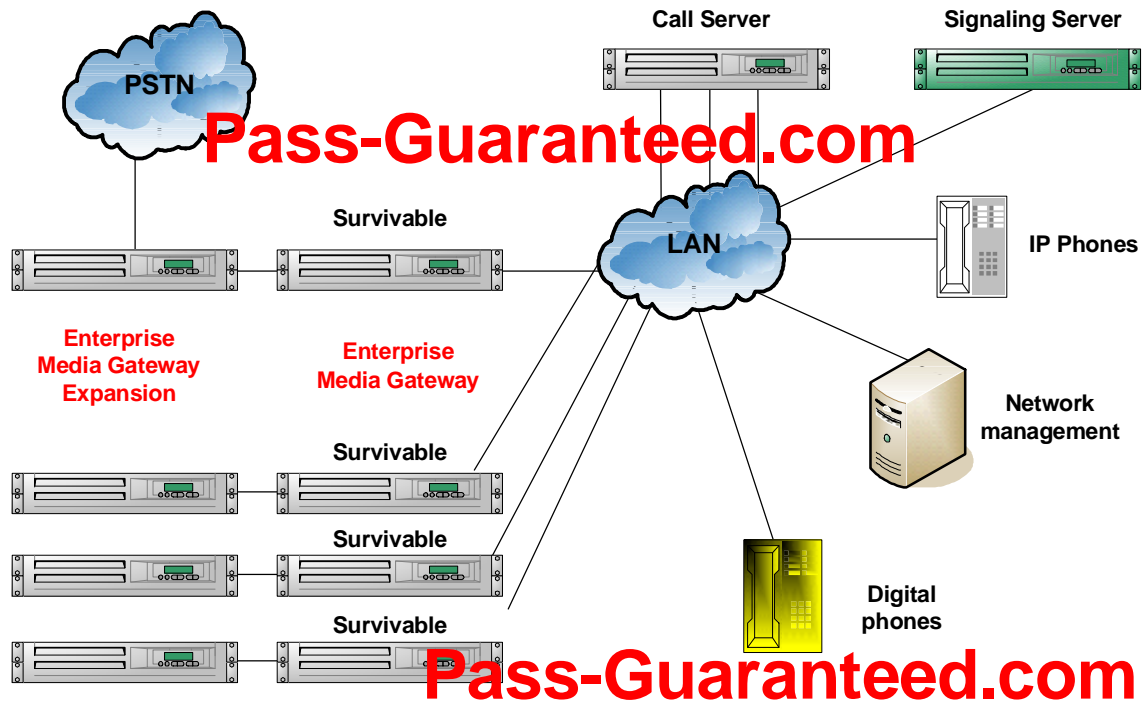
Pass-Guaranteed.com Custom Bundle Requests, cover all Pass-Guaranteed.com Products!!! You can visit our Special Bundle Discounts from Pass-Guaranteed.com or make your own Custom Bundle Request with Pass-Guaranteed.com here: <http://www.pass-guaranteed.com/bundles.htm>

Pass-Guaranteed.com Custom Bundle Request Form let's you create your own Bundle Of Products!!! You can select and group any of our products for your Custom Bundle and we will give you up to a **50% Discount** on your Custom Bundle Package. This includes our [Practice Test Questions](#), [Online Course Tutorials](#), [Study Guides](#), [Lab Scenarios](#) and our [Certified Online Instructor](#) service.

Please visit: <http://www.pass-guaranteed.com/custom-request.htm> If you would like to purchase a Custom Bundle from Pass-Guaranteed.com.

QUESTION: 1

Exhibit:



Given the CS 1000 RIs.4.0 network shown in the exhibit, which single network device could you use to create routed VLANs for the VoIP traffic, management, and signaling data?

- A. shared hub
- B. Layer 2 switch
- C. Layer 3 switch
- D. Power over LAN (PoL) device

Answer: C

QUESTION: 2

Pass.com has deployed a CS 1000S RIs.4.0 system for its main offices. The system includes one Signaling Server, one Call Server, one Enterprise Media Gateway and an expansion Media Gateway. The customer also plans to open a branch office with 200 seats. Which additional components would you require?

- A. a Survivable Remote Gateway and a Signaling Server
- B. an Enterprise Media Gateway 1000B and a Call Server
- C. a Enterprise Media Gateway 1000B and a Signaling Server

- D. a Survivable Remote Gateway and Voice Gateway Media Card
- E. an Enterprise Media Gateway 1000B, a Signaling Server and Call Server

Answer: C

QUESTION: 3

A corporation wants to use their existing VoIP technology to provide transparent telephone services to their newly acquired offices that are geographically dispersed. The main office is already using CS 1000M Cabinet RIs. 4.0 with 500 IP Phones. Each new branch office will have a total of 60 users. How many new branch offices can the company integrate into the existing VoIP infrastructure without needing to replace the existing system?

- A. 2
- B. 8
- C. 9
- D. 25

Answer: B

QUESTION: 4

Following an analysis of voice traffic in preparation for a CS 1000M RIs. 4.0 Implementation, Pass.com discovers that most calls from the administrative offices were to other employees with the company. The calls stayed within the IP network. Their call center placed more calls to IP Phones across WAN links. The company wants to use different CODECs across the WAN links between IP Phones on different locations.

Which mechanism can they configure to specify the CODEC used between different telephones on the network?

- A. Implement private zone bandwidth management.
- B. Implement a single H.323 Gateway for the CS 1000M system.
- C. Define the call center network as the CLAN and the Administrative office as the ELAN.
- D. Configure the router to remap the CODEC for all voice traffic flowing across a WAN link.

Answer: A

QUESTION: 5

Which statement most accurately describes the function of the Enterprise Media Gateway 1000 T(EMG1000T) in a CS 1000E RIs. 4.0 system deployment?

- A. The EMG 1000 T only provides analog trunking access to PSTN and May be accessed by multiple CS 1000E system
- B. The EMG 1000T provides analog trunking access to the PSTN, supports up to two MG 1000T Chassis, and can be accessed by multiple CS 1000E systems or other systems on the network.
- C. The EMG 1000T provides digital trunking access to the PSTN, support up to five EMG 1000T Chassis with optional corresponding Expansion Chassis, up to 20 T 1/PRI circuits and may be accessed by multiple CS 1000E systems or other systems on the network.
- D. The EMG 1000T provides digital trunking access to the PSTN and supports up to 10 MG 1000T Chassis with optional corresponding Expansion Chassis, up to 40 T1 PRI circuits and may be accessed by multiple CS 1000E system or other systems on the network.

Answer: C

QUESTION: 6

In the process of provisioning a CS 1000S RIs. 4.0 system. Pass.com wants to include a branch office into the configuration with 50 analog and 400 IP Phones. Each IP Phone carries 6 Centi-Call Seconds (CCS) each, 50% of the calls go to other IP Phones and 50% go to analog telephones. The Voice Gateway Media Cards (VGMCs) for the Enterprise Media Gateway 1000B have a call capacity of 794 CCS. How many VGMCs will be needed?

- A. one
- B. two
- C. three
- D. four

Answer: A

QUESTION: 7

Pass.com has a CS 1000M-SG RIs. 4.0 system installed with one Signaling Server with 512 MB of memory. This system networks to multiple sites with Voip using 200 IP Peer H323 trunks. Because additional sites have been added, the customer needs to expand this network. To configure an additional 200 IP Peer H323 trunks, what must be done?

- A. Add one IP Trunk card.

- B. Just configure the additional trunks.
- C. Add one additional Signaling Server.
- D. Just purchase additional virtual trunk licenses

Answer: D

QUESTION: 8

Pass.com with a CS 1000 RIs. 4.0 system at site A is networked to two other sites using a WAN. They plan to configure an Alternate Network Redirect Server (NRS) in case of failure. The existing CS 1000 RIs. 4.0 system consists of one Call Server, one Signaling Server and one Enterprise Media Gateway 1000 (EMG 1000) . The primary NRS is installed on the Signaling Server at site A. Where should the Alternate NRS be deployed?

- A. on the primary Call Server
- B. on the survivable EMG 1000
- C. on the primary Signaling Server
- D. on an separate system in a separate geographic location

Answer: D

QUESTION: 9

Pass.com plans to deploy a CS 1000M-SG RIs. 4.0 system at their headquarters. Some of their call center agent are located in a branch office. They want all applications to be centrally located and managed at the headquarters. Agents are to access services via an IP connection and get local access to the PSTN through PRI connections. What should the company consider as part of their traffic plan?(Choose three)

- A. the number of PRI cards for ESN access
- B. the creation of private zone for the agents
- C. the engineering requirements for Multimedia Processing Units (MPUS)
- D. the total WAN requirements for data between the branch office and the main office.
- E. The total WAN bandwidth required for the remote call center agent telephony needs

Answer: A, C, D

QUESTION: 10

Pass.com wants to configure the Enterprise Media Gateways (EMG) on their CS 1000 RIs. 4.0 system for survivability. They also need to interpret network requirements for the system. Which configuration ensures network survivability?

- A. The survivable EMG TLAN IP address must be on the same TLAN subnet as the Call Server.
- B. The survivable EMG ELAN IP address must be on the same ELAN subnet as the Call Server.
- C. The survivable EMG ELAN IP address must be on a different ELAN subnet than the Call Server.
- D. The survivable EMG must be separated from the Call Server by a Layer 3 device networked with the two Call Servers.

Answer: B