

Tutorial:

Creating Relative Features

This tutorial steps through the process of creating relative features in TreeSap.

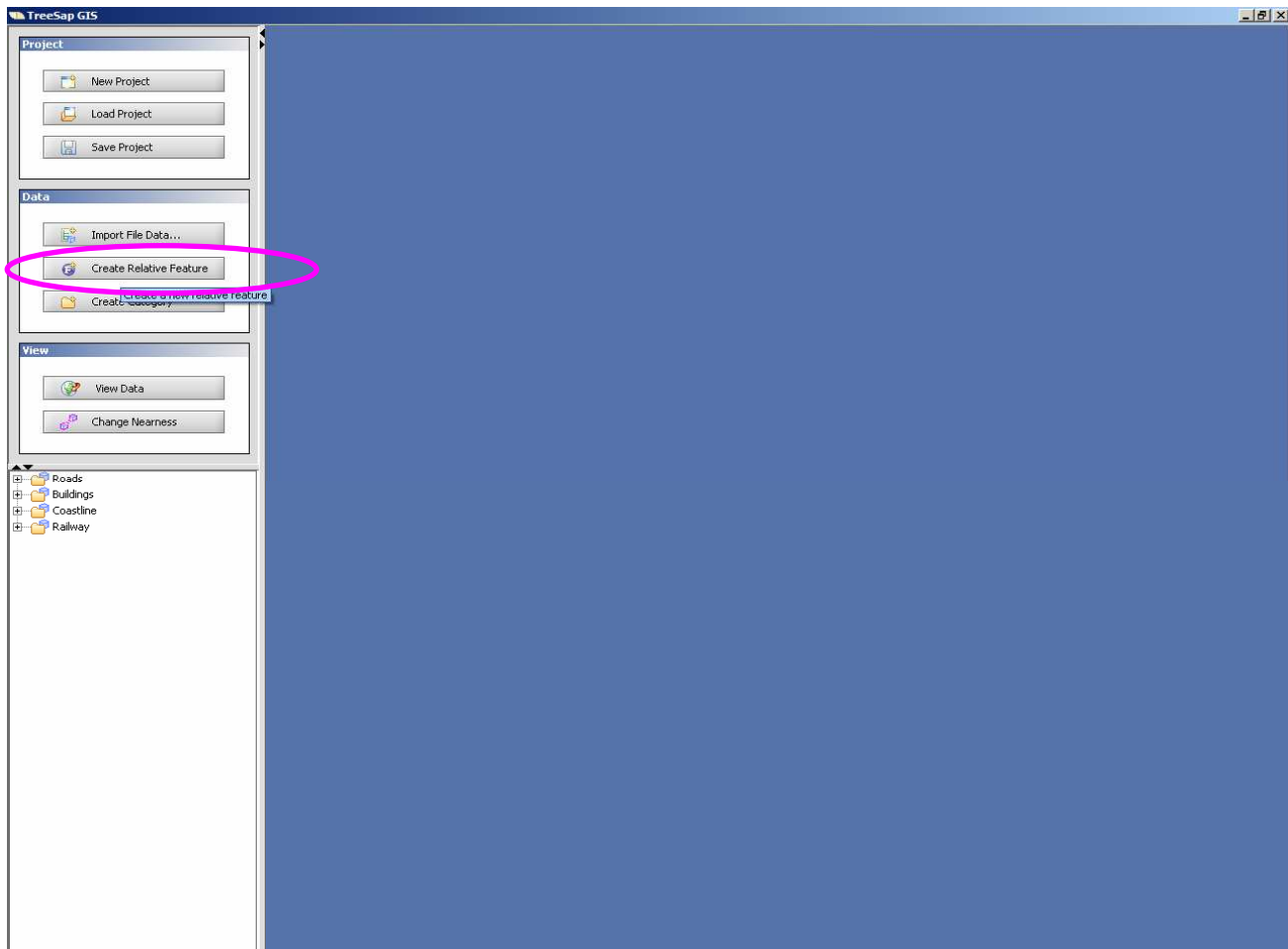
RELATIVE FEATURES

- A relative feature is a feature with a location that is defined solely in terms of its relationships with other standard/relative features
- TreeSap can find a possible location that meets the criteria given by the relative feature's relationships
- You can then drag the relative feature to reposition it – TreeSap gives you an indication of how well the new location meets the relationships given

1. First load in a project

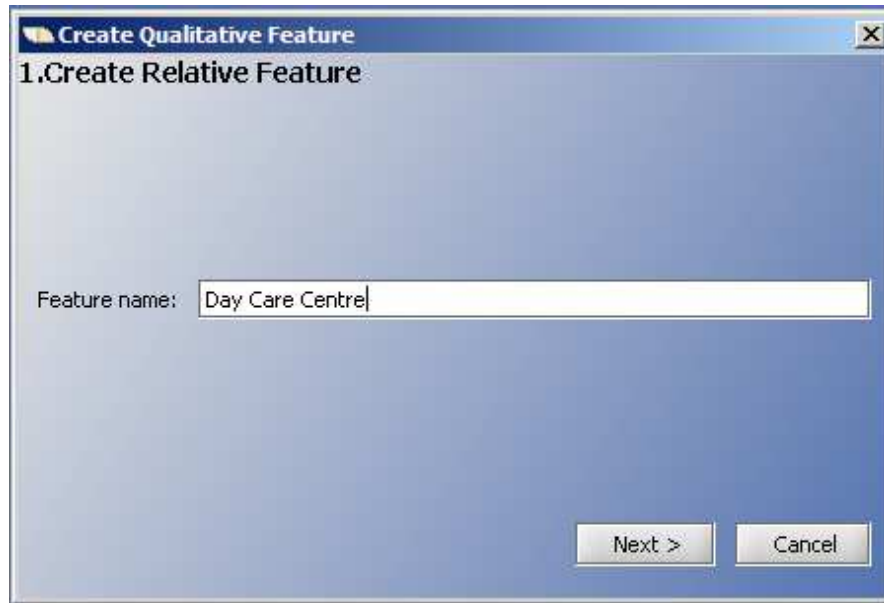
- Select the “Load Project” button
- Choose the project titled “DemonstrationProject.xml”, in the Tutorial/SampleData directory

2. Click on the “Create Relative Feature” button



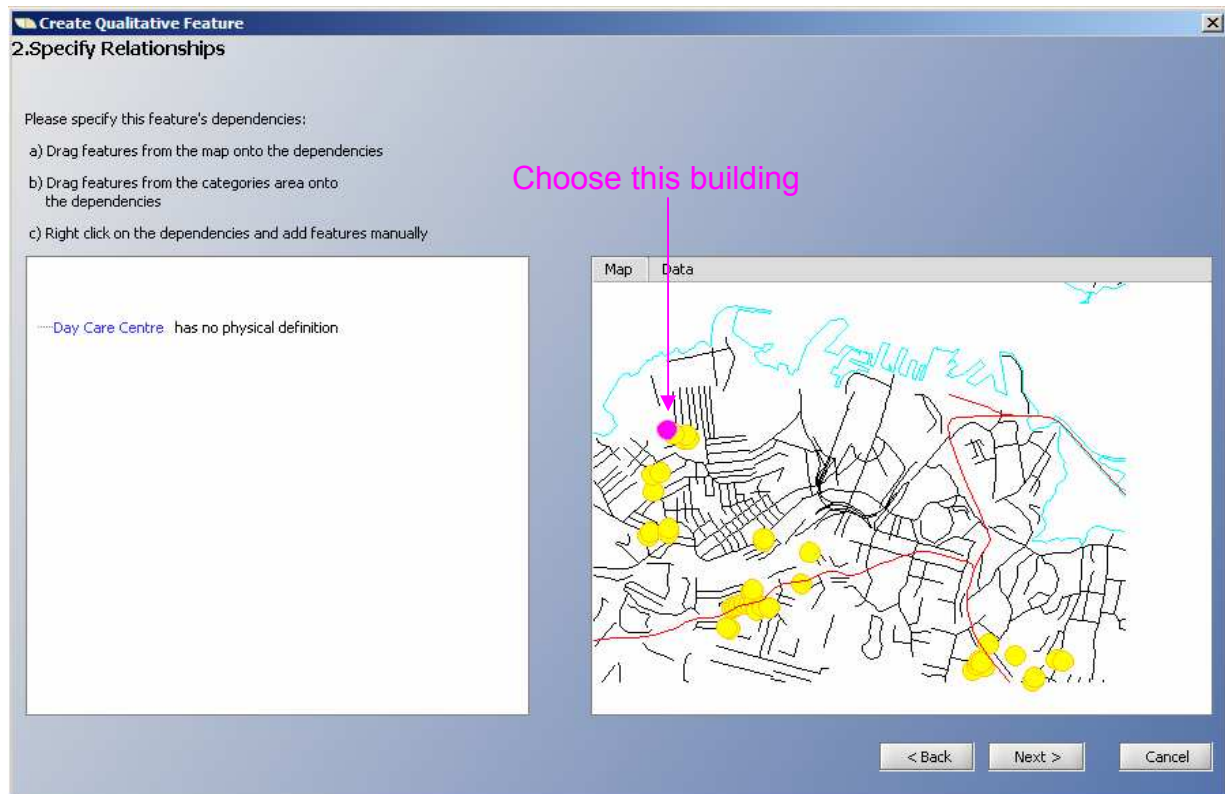
3. Specify the new relative features name

- In this example, we will describe the location of a day care centre
- Call the relative feature “Day Care Centre”

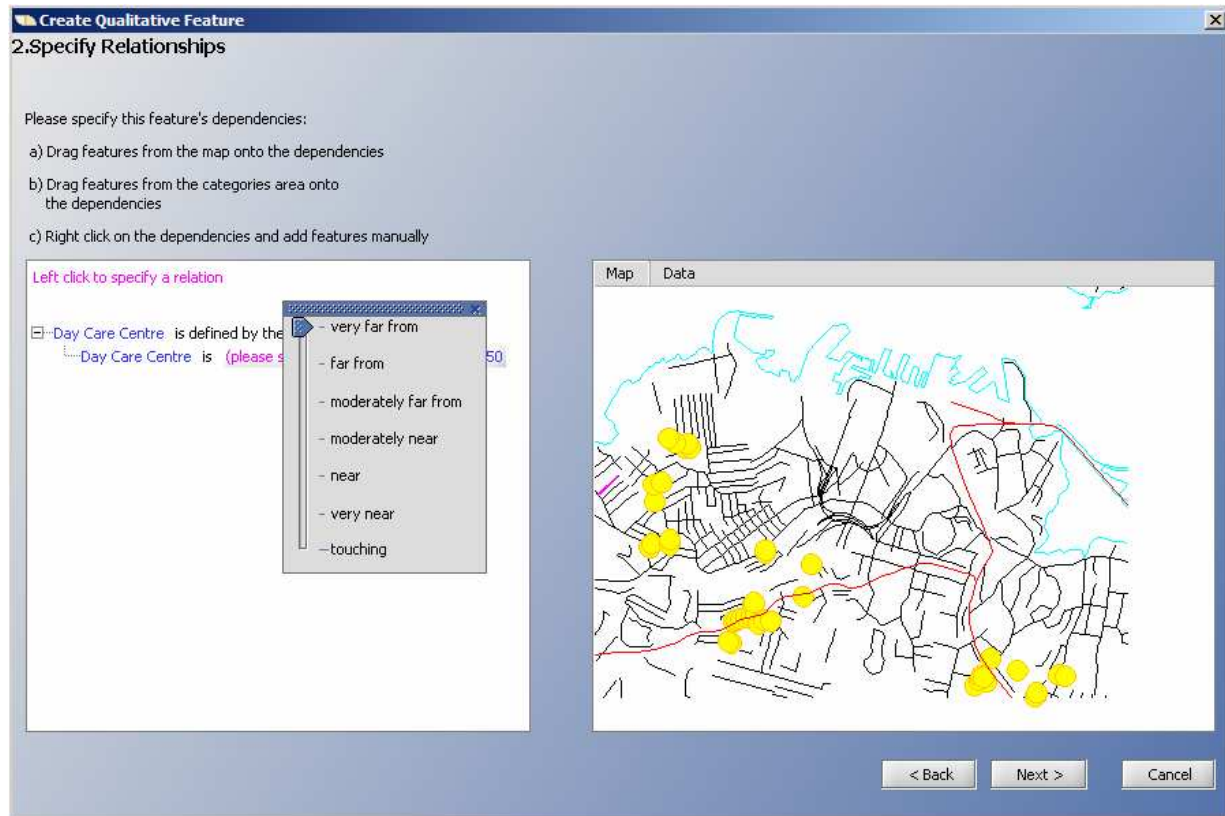


4. Now we will describe the relationships that the relative feature has with other features

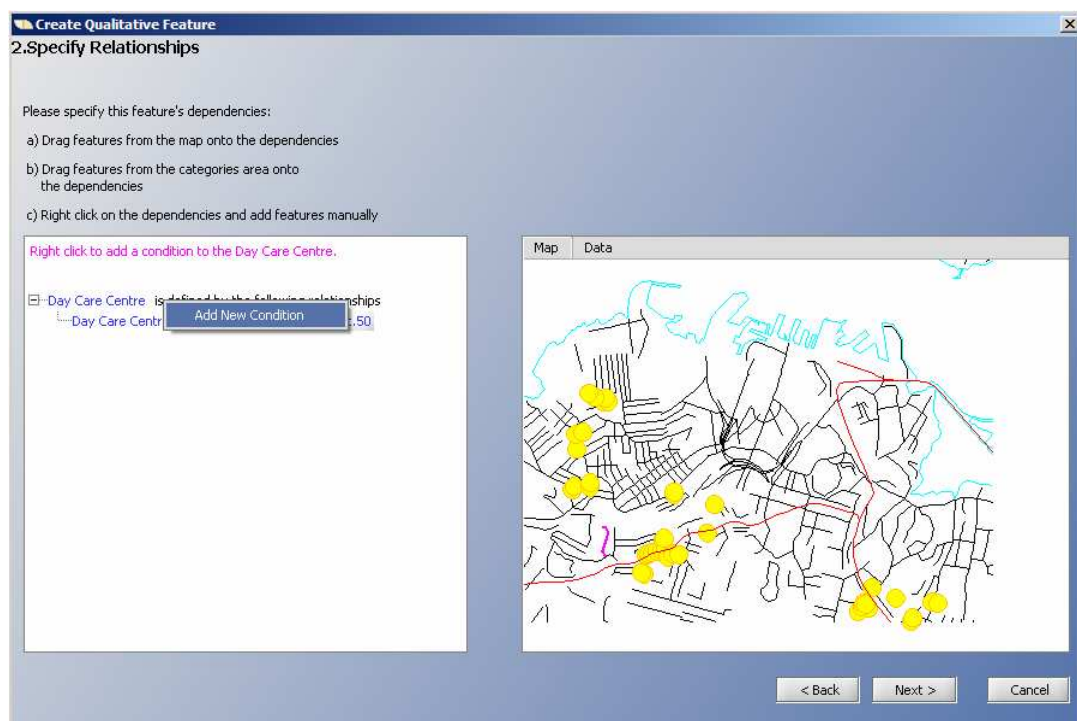
- First we will use the map to specify a particular feature
 - To zoom in to the map, use the mouse wheel
 - We will make one criteria be that the day care centre must be far away from a particular building – for example far away from a noisy factory
 - Hover the mouse over the building as specified in the screen shot below – notice that the building lights up



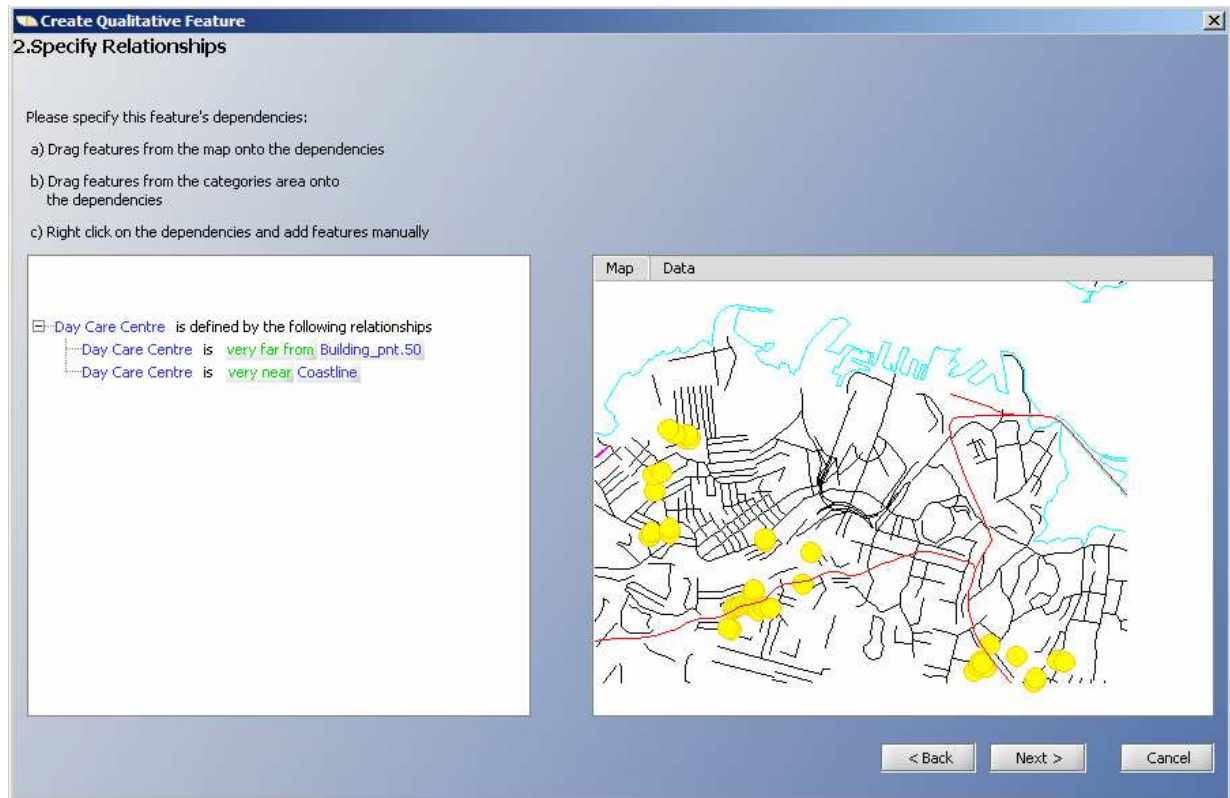
- Press down the mouse button and drag the building into the relationship description in the left panel
 - A condition is now built relating the Day Care Centre to the building
 - The condition needs refining – this is done in the same way that a query is specified
 - Set the condition to 'Very Far From'



- Next we will use the description in the left panel to specify the next relationship
 - This is very similar to building a query
 - *Right click* on the top row of the description (the one that says: "Day Care Centre is defined by the following relationships") – We will now add a top level condition



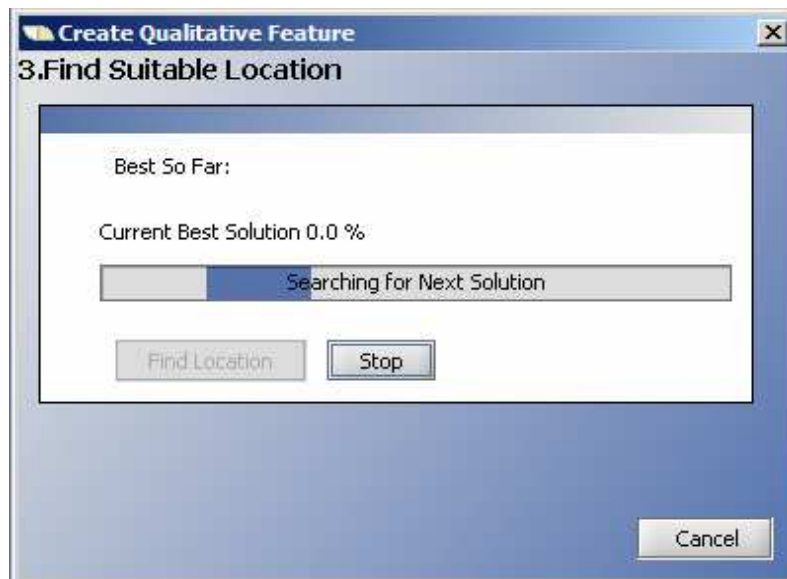
- Set the relationship as: Day Care Centre is *Very Near* the *Coastline*



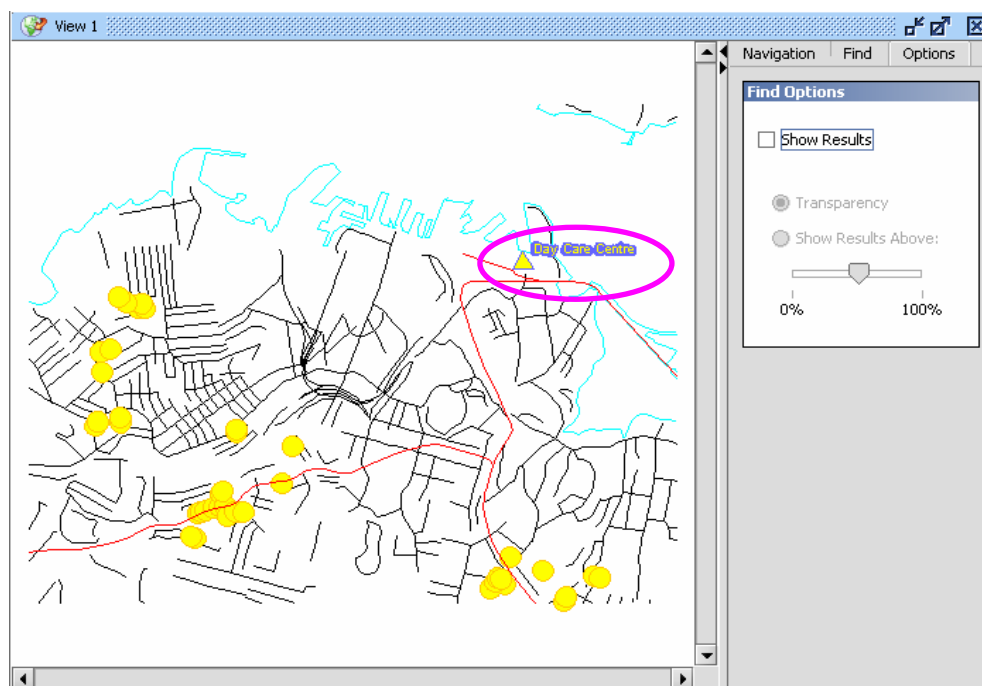
- Press "Next" button to continue

5. TreeSap will now attempt to find a possible location that meets the criteria given

- Click on the button "Find Location"

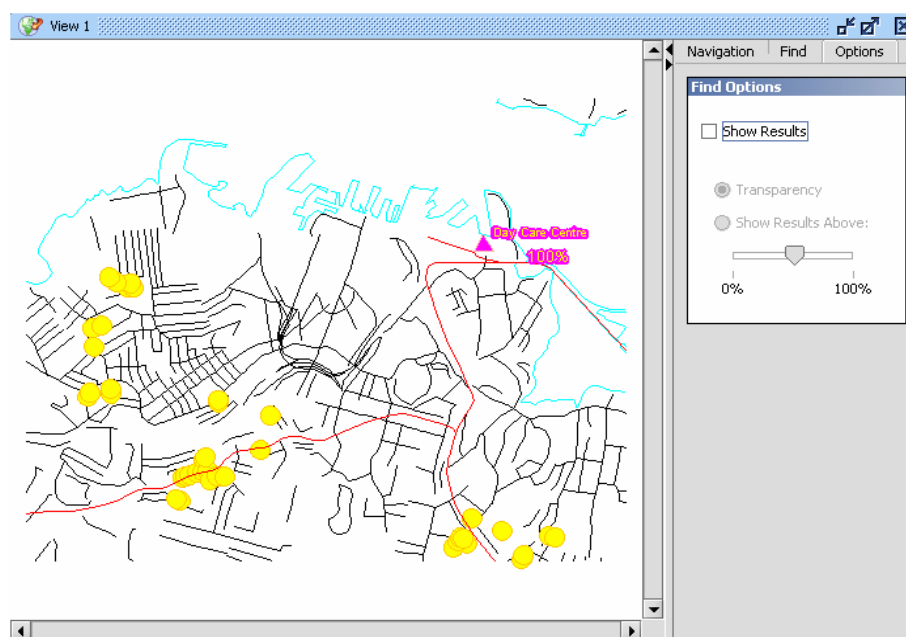


- When this has completed, click on the “View Data” button
 - The feature has now been given a location

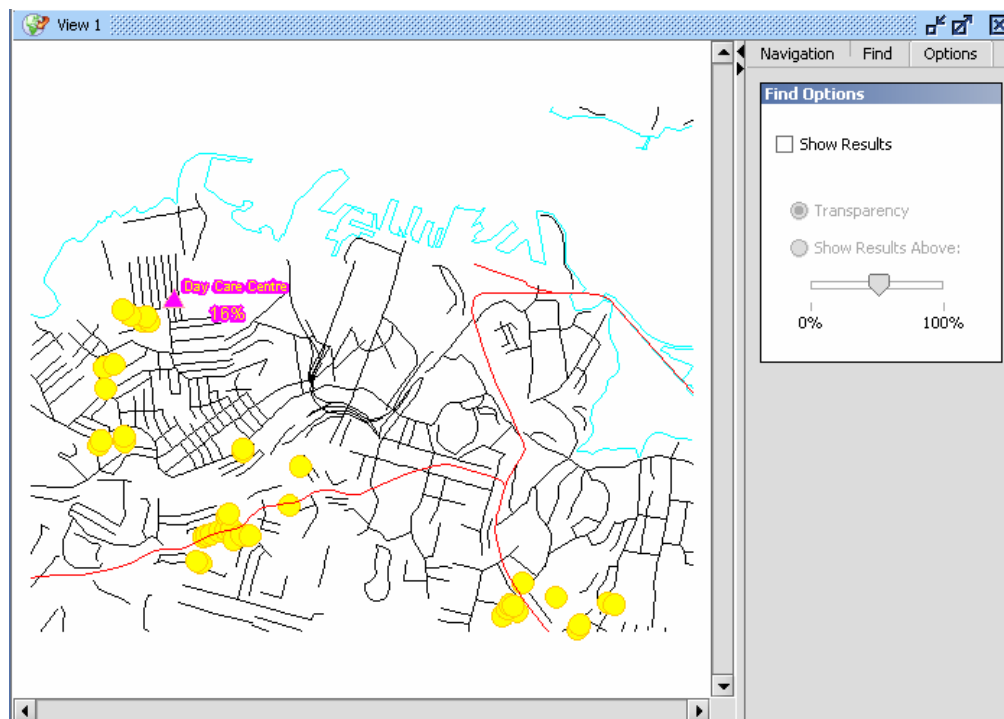


6. Now we will reposition the relative feature manually

- Hover the mouse over the feature
- Notice that it lights up, and gives a percentage indicating how well the location meets the criteria



- Press the mouse button and drag the feature
 - Drop the feature near the building that we specified earlier



- Now notice that the percentage score has dropped
 - This indicates that this location is not as appropriate as the previous location